

1.  $867 + 42 + 208 =$   
 (a) 1116            (b) 1117            (c) 1016            (d) 1017
2.  $274 \times 37 =$   
 (a) 311            (b) 11,138            (c) 10,131            (d) 10,138
3.  $5.89 + 7.064 =$   
 (a) 12.95            (b) 12.954            (c) 1.295            (d) 7.653

4.  $\left(\frac{3}{4}\right)\left(\frac{3}{8}\right) =$   
 (a)  $\frac{9}{32}$             (b)  $\frac{3}{16}$             (c) 2            (d)  $2\frac{1}{4}$

5.  $\frac{4 + 3}{4 - 6} =$   
 (a) -1            (b)  $-\frac{7}{2}$             (c)  $-\frac{1}{2}$             (d) 3



What fraction names the shaded part of the whole rectangle?

- (a)  $\frac{5}{3}$             (b)  $\frac{3}{5}$             (c)  $\frac{5}{8}$             (d)  $\frac{3}{8}$
7.  $8 - 2\frac{5}{9} =$   
 (a)  $5\frac{2}{5}$             (b)  $5\frac{4}{9}$             (c)  $6\frac{2}{9}$             (d)  $6\frac{4}{9}$
8. The decimal representation of  $\frac{3}{8}$  is  
 (a) 3.8            (b) 2.33            (c) 0.375            (d) 0.0375

9.  $4.301 \times 0.62 =$

- (a) 26.62      (b) 26.6662      (c) 4.921      (d) 2.66662      (e) .2662

10.  $-5 [ 4 - 2(-3) ] =$

- (a) -70      (b) -50      (c) -10      (d) 5      (e) 10

11. Which is smallest?

- (a) 0.67      (b)  $\frac{2}{3}$       (c)  $\frac{3}{5}$       (d) 0.7      (e) 0.61

12.  $(\frac{2}{3} + 1)^2 =$

- (a)  $\frac{25}{9}$       (b)  $\frac{13}{9}$       (c)  $\frac{5}{3}$       (d)  $\frac{4}{9}$       (e)  $\frac{10}{3}$

13. What is the area in square inches of the region between two concentric circles of radii 5 inches and 3 inches? See figure.

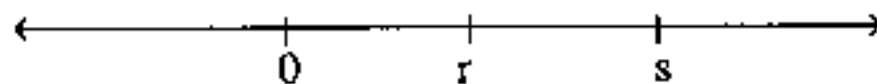
- (a)  $2\pi$       (b)  $4\pi$       (c)  $9\pi$   
(d)  $16\pi$       (e)  $25\pi$



14. An article usually sells for \$8.00 but is on sale at 20% off. If there is a sales tax of 5%, the total cost of the article to the buyer is

- (a) \$6.00      (b) \$6.08      (c) \$6.40      (d) \$6.72      (e) \$6.80

15. Let two numbers  $r$  and  $s$  be located on a number line as shown below. Which one of the following is true?



- (a)  $r > s > 0$       (b)  $s < 0 < r$       (c)  $0 > s > r$   
(d)  $0 > r > s$       (e)  $0 < r < s$

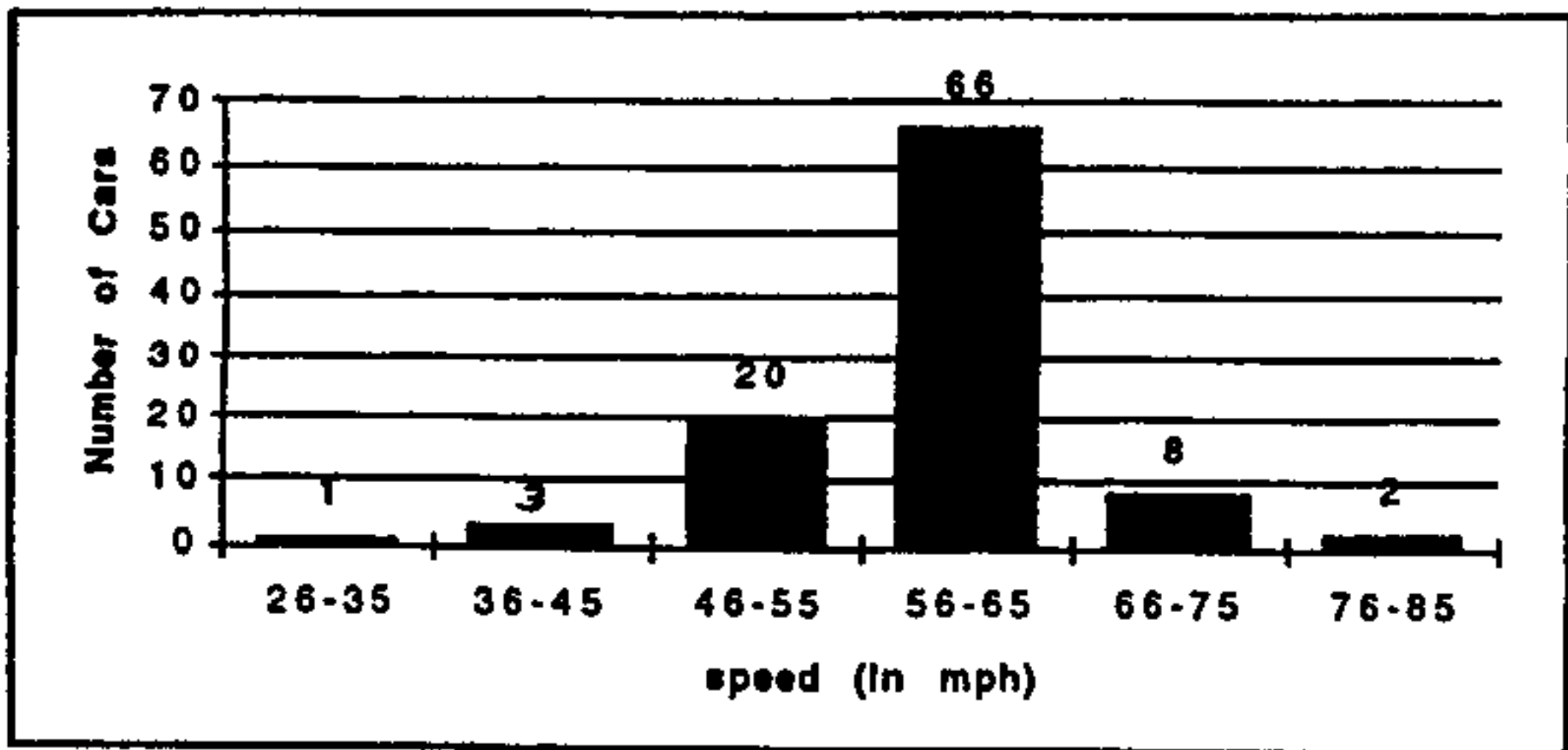
16. If  $\frac{4}{3}x - \frac{1}{2} = 0$ , then  $x =$

- (a)  $\frac{3}{8}$       (b)  $\frac{2}{3}$       (c)  $\frac{3}{2}$       (d)  $\frac{11}{6}$       (e)  $\frac{8}{3}$

17. If it takes 200 gallons of sap to make 5 gallons of maple syrup, how many gallons of sap are needed to make 32 gallons of maple syrup?

- (a) 800      (b) 1280      (c) 312.5      (d) 1320

18. In a recent traffic survey the speed of cars traveling on an interstate highway was clocked by radar. Below is a bar graph showing the speed categories used and the number of cars that were in each category. Use the graph to find how many drivers exceeded the speed limit of 65 mph.



- (a) 76      (b) 24      (c) 10      (d) 8

19. Rachel saw a dress priced at \$75. A sign above the rack said that every dress was marked down an additional 25% from the price on the sticker. If Rachel decides to buy the dress, how much will it cost her?

- (a) \$18.75      (b) \$50.00      (c) \$56.25      (d) \$72.50

20. If  $\frac{x}{6} = \frac{18}{54}$  then  $x =$

- (a) 3      (b) 2      (c) 4      (d) 9

## Arithmetic Sample Test Answers:

1. b

11. c

2. d

12. a

3. b

13. d

4. a

14. d

5. b

15. e

6. c

16. a

7. b

17. b

8. c

18. c

9. d

19. c

10. b

20. b